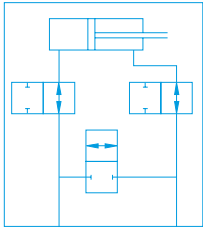


Ball valve-function systems

Shut-off blocks · technical information

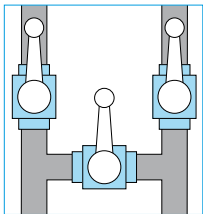


Shut-off blocks with integrated bypass and safety-lock



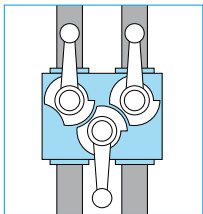
Application/function:

For liquid and oily media as per the compatibility table in the technical data appendix; for insertion upline of actuator cylinders with the capability to both block the cylinder feed lines and to short-circuit them.



The previous situation:

Installation of separate ball valves in the piping system. Here a total of twelve pipe joints must be provided, using two tees. This is labor-intensive and thus expensive. In addition, the hazard of leaks rises with the number of joints.



Our solution for the problem:

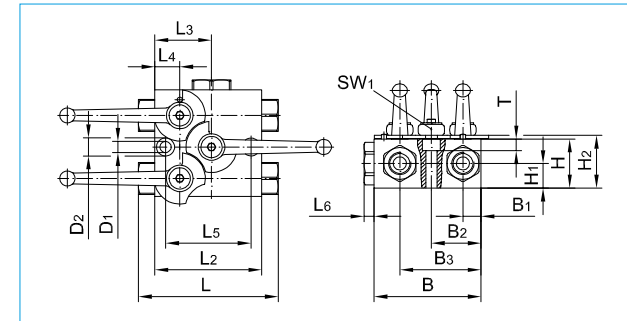
Combining the three shut-off functions within a single block by incorporating three ball valve assemblies. Only four pipe connections need to be made. A certain sequence in operation is achieved by cam interlocks on the ball valves:

1. block the rod end
2. open the bypass
3. block the piston end

Advantages:

- clear design and user-friendly arrangement
- quick assembly with a reduced number of pipe connections
- reduced hazard of leaks
- mutual interlocks for the valves give a specific operating sequence and prevent any pressure intensification in the rod end of the cylinder
- switches can be attached

Shut-off blocks · steel · DN 10 - DN 25

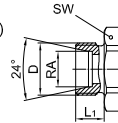


Handle included in delivery
 For handles refer to "Attachments, accessories".
 Please check pressure ratings of pipe fittings!
 Also available with most other connections
 Custom orders on request
 All dimensions subject to change without notice
 Dimensions in mm
 Weight in kg
 Pressure in bar

Body:	steel
Ball:	steel, hard chrome plated
Stem:	steel
Ball seats:	POM
Stem seals:	NBR

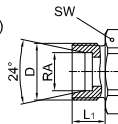
Type of connection

For cut (clamp) ring tube fittings DIN 2353 light series ISO 8434-1



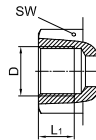
Type of connection	DN	Thread D	RA	L	L1	L2	L3	L4	L5	L6	B	B1	B2	B3	H	H1	H2	D1	D2	T	SW	SW1	Handle Weight Code	PN	Article-No.	
For cut (clamp) ring tube fittings DIN 2353 light series ISO 8434-1	10	M18 x 1,5	12	120	11	90	51,0	22,8	60	6,5	90	20,7	45,7	70,7	40	19,5	43,5	8,4	15	9	24	8	2	1,9	500	250 001
	12	M22 x 1,5	15	132	12	100	53,0	23,5	80	9,5	100	17,0	46,5	76,0	46	23,0	49,5	10,5	17	11	30	10	3	3,2	500	250 002
	20	M30 x 2	22	149	14	110	66,5	29,0	90	12,0	125	23,0	60,0	97,0	62	31,0	68,5	10,5	17	11	41	14	53	5,5	315	250 004
	25	M36 x 2	28	173	14	135	76,6	32,6	115	6,5	147	27,8	71,8	115,8	68	34,0	74,5	10,5	17	11	50	14	53	8,3	315	250 005

For cut (clamp) ring tube fittings DIN 2353 heavy series ISO 8434-1



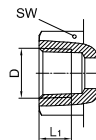
For cut (clamp) ring tube fittings DIN 2353 heavy series ISO 8434-1	10	M22 x 1,5	14	126	14	90	51,0	22,8	60	6,5	90	20,7	45,7	70,7	40	19,5	43,5	8,4	15	9	24	8	2	1,9	500	250 006
	12	M24 x 1,5	16	136	14	100	53,0	23,5	80	9,5	100	17,0	46,5	76,0	46	23,0	49,5	10,5	17	11	30	10	3	3,2	500	250 007
	20	M36 x 2	25	157	18	110	66,5	29,0	90	12,0	125	23,0	60,0	97,0	62	31,0	68,5	10,5	17	11	41	14	53	5,5	315	250 009
	25	M42 x 2	30	185	20	135	76,6	32,6	115	6,5	147	27,8	71,8	115,8	68	34,0	74,5	10,5	17	11	50	14	53	8,3	315	250 010

BSP-female thread DIN EN ISO 228-1



BSP-female thread DIN EN ISO 228-1	10	G 3/8	-	118	14	90	51,0	22,8	60	6,5	90	20,7	45,7	70,7	40	19,5	43,5	8,4	15	9	24	8	2	1,9	500	250 011
	12	G 1/2	-	131	15	100	53,0	23,5	80	9,5	100	17,0	46,5	76,0	46	23,0	49,5	10,5	17	11	30	10	3	3,2	500	250 012
	20	G 3/4	-	143	18	110	66,5	29,0	90	12,0	125	23,0	60,0	97,0	62	31,0	68,5	10,5	17	11	41	14	53	5,5	315	250 014
	25	G 1	-	178	18	135	76,6	32,6	115	6,5	147	27,8	71,8	115,8	68	34,0	74,5	10,5	17	11	50	14	53	8,3	315	250 015

NPT-female thread ANSI/ASME B1.20.1-1983



NPT-female thread ANSI/ASME B1.20.1-1983	10	3/8-18 NPT	-	118	10,3	90	51,0	22,8	60	6,5	90	20,7	45,7	70,7	40	19,5	43,5	8,4	15	9	24	8	2	1,9	500	250 016
	12	1/2-14 NPT	-	131	13,6	100	53,0	23,5	80	9,5	100	17,0	46,5	76,0	46	23,0	49,5	10,5	17	11	30	10	3	3,2	500	250 017
	20	3/4-14 NPT	-	143	14,1	110	66,5	29,0	90	12,0	125	23,0	60,0	97,0	62	31,0	68,5	10,5	17	11	41	14	53	5,5	315	250 018
	25	1-11 1/2 NPT	-	178	16,8	135	76,6	32,6	115	6,5	147	27,8	71,8	115,8	68	34,0	74,5	10,5	17	11	50	14	53	8,3	315	250 019

