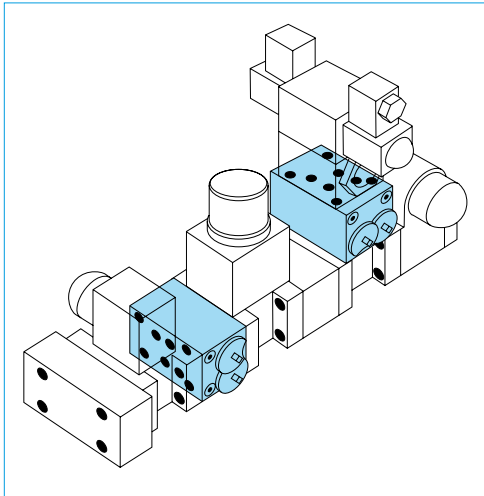




Shut-off plates and sandwich elements for interconnected systems



The previous situation:

The large number of control elements means large systems susceptible to malfunctions. If, for example, a solenoid valve at the central hydraulic system for an aluminium rolling mill failed, the controlled component would have to be operated manually or production would have to be suspended to change the valve.

This replacement makes it necessary to depressurize the system, to drop up external loads which cylinders are supporting and to drain the fluid from the riser lines to the cylinder. Once the solenoid valve has been changed, the lines will have to be refilled and bled.

Our solution for the problem:

With the use of our sandwich-plate, which is bolted separately to the control block, all the channels through the plate can be blocked and the directional-control valve can be replaced without having to depressurize or drain lines and without affecting the other control units on the same block. All channels are open during normal operation. The operating handle can be removed to prevent unauthorized actuation.

Advantages:

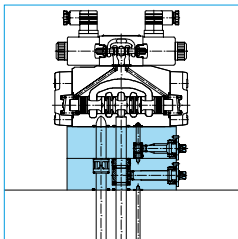
- full bore design causes no pressure drop
- significant reduction in hydraulic system downtime
- no need to drain fluid, bleed air or refill the system
- simplified start-up and maintenance due to the ease of changing flushing plates and directional valves
- pressure can be maintained in cylinders so that the supported loads do not need to be shored up
- standard mounting and porting patterns allow retrofit without rework
- proprietary design increases safety by utilizing separate mechanically isolated bolts for mounting the sandwich-plate and directional valve; removing the directional valve cannot accidentally loosen the sandwich-plate

Applications:

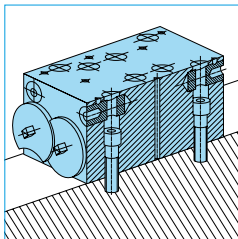
For liquid media as per the compatibility table in the technical data appendix

On request:

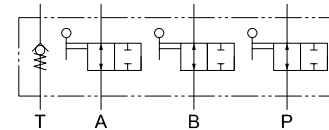
Limit switch, proximity switch, locking devices; also available in other materials and combinations



Operation setting:
Sandwich plate with the solenoid valve mounted on top



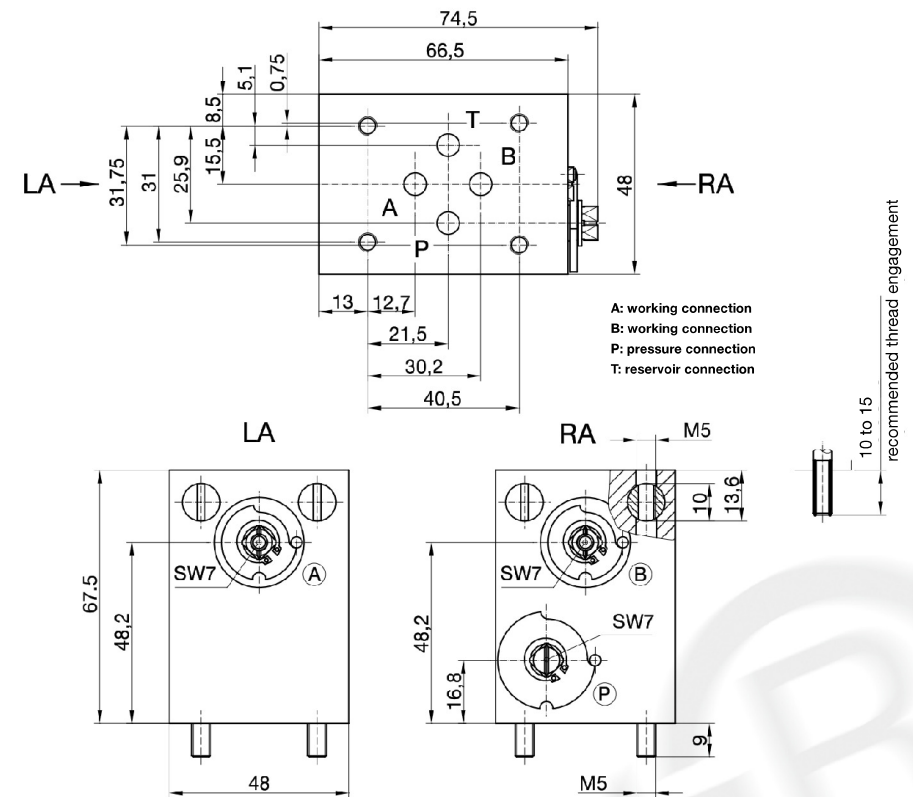
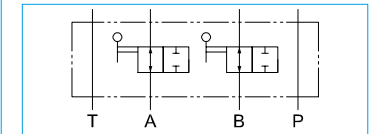
Repair setting:
Passages inside the sandwich plate shut-off; plate remains bolted to the hydraulic control block. Solenoid valve removed.



Article-No. 208 030

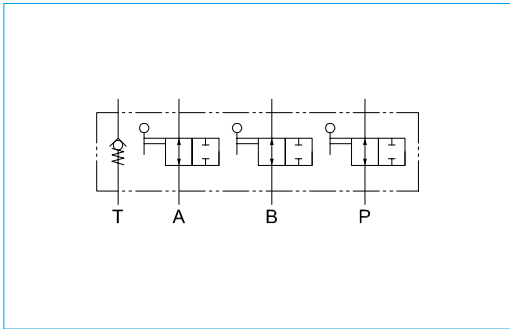
Weight: 1,55 kg
Opening pressure of check valve: approx. 0,3 bar
Drilling pattern to DIN 24340-A6 and ISO 4401-03-02-0-94

Custom orders on request
All dimensions subject to change without notice
Also available with blocking in A and B only
Dimension sheet on request, locking device retrofittable



Ball valve-function systems

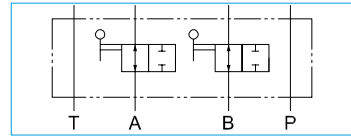
Sandwich plate · NG 10 · PN 315



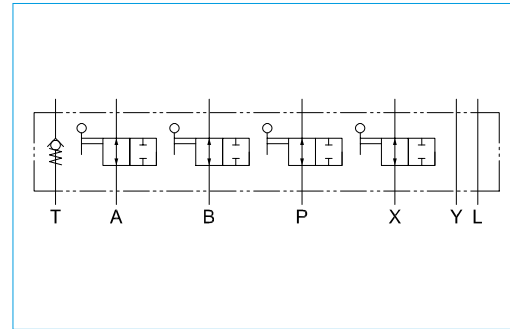
Article-No. 208 032

Weight: 4,45 kg
 Opening pressure of check valve: approx. 0,3 bar
 Drilling pattern to DIN 24340-A10 and
 ISO 4401-05-04-0-94

Custom orders on request
 All dimensions subject to change without notice
 Also available with blocking in A and B only
 Dimension sheet on request, locking device retrofitable



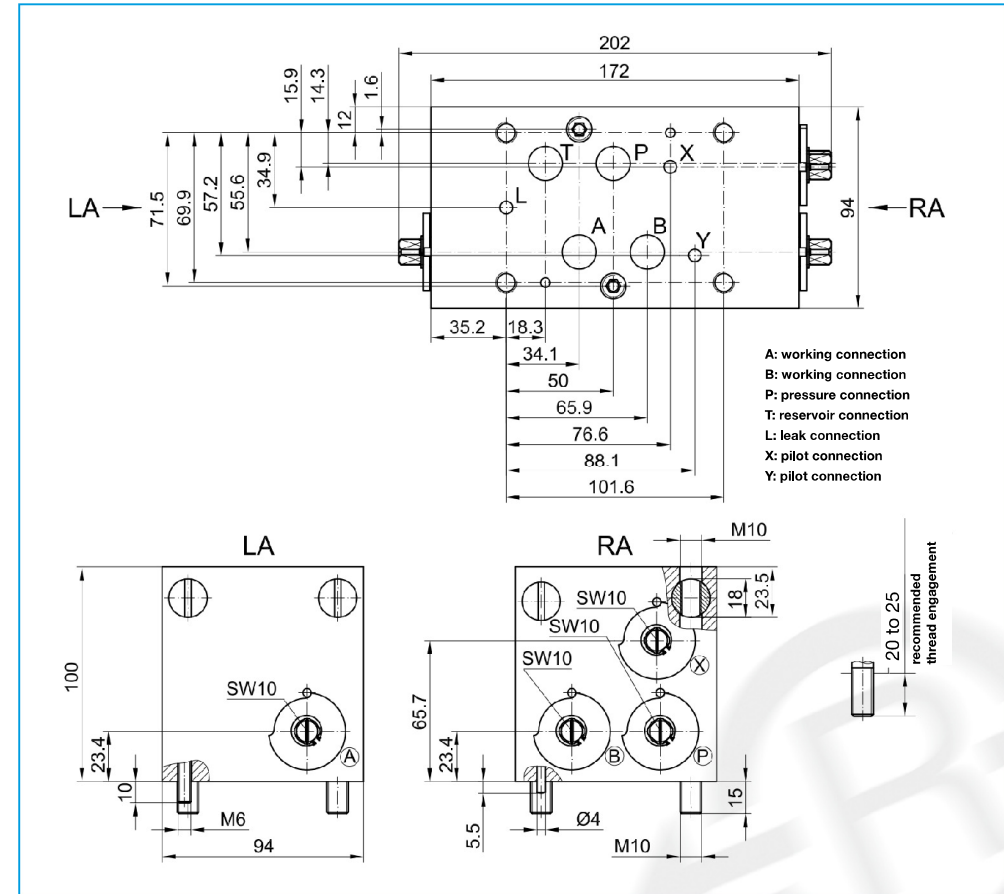
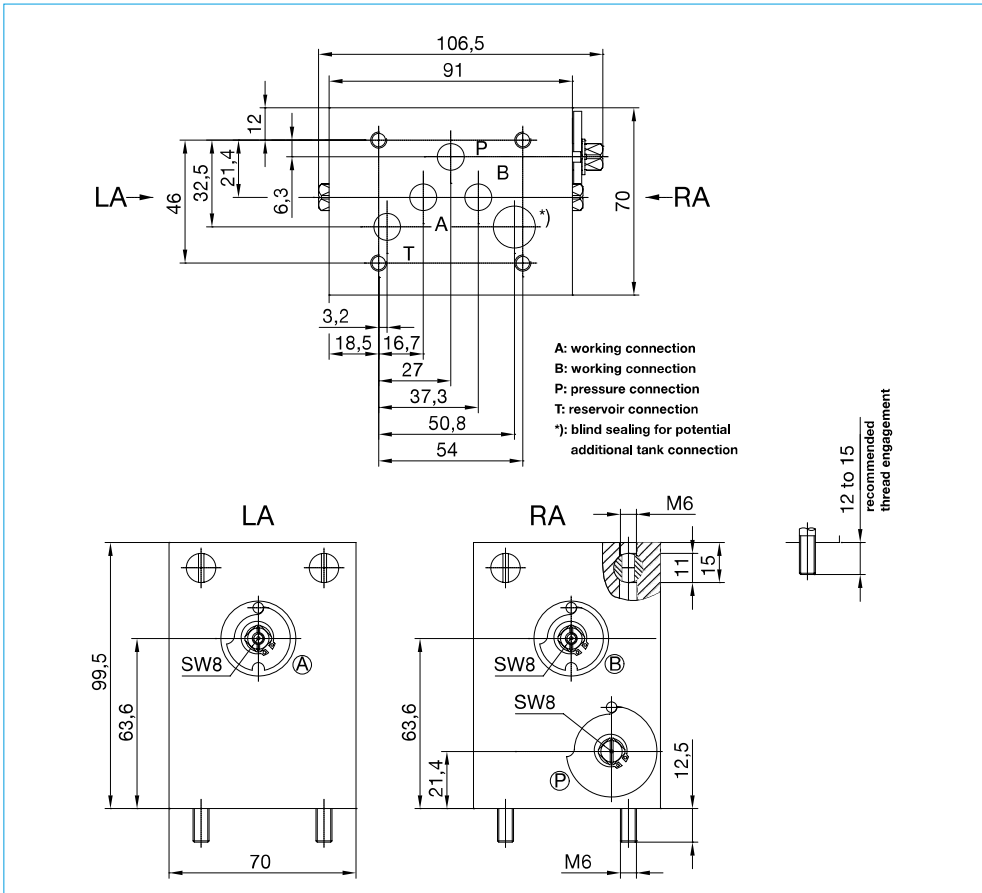
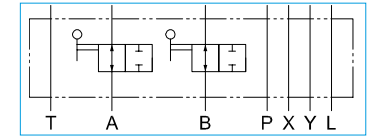
Sandwich plate · NG 16 · PN 315



Article-No. 208 034

Weight: 11,7 kg
 Opening pressure of check valve: approx. 0,3 bar
 Drilling pattern to DIN 24340-A16 and
 ISO 4401-07-06-0-94

Custom orders on request
 All dimensions subject to change without notice
 Also available with blocking in A and B only
 Dimension sheet on request, locking device retrofitable



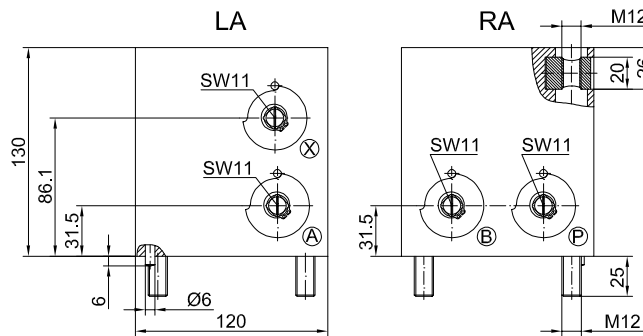
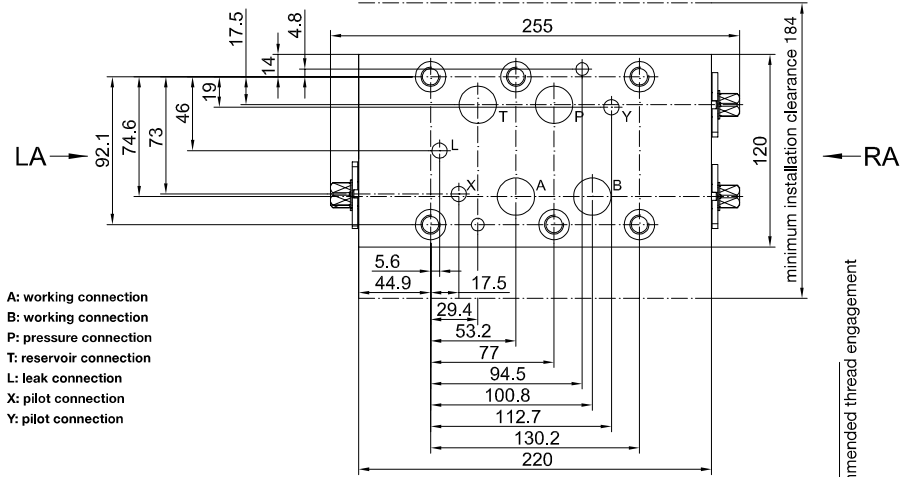
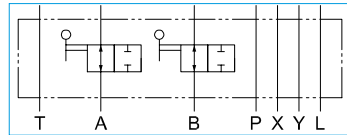
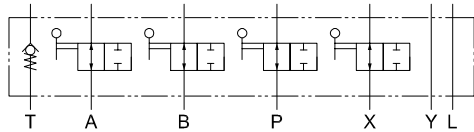
Ball valve-function systems

Sandwich plate · NG 25 · PN 315

Article-No. 208 036

Weight: 25.4 kg
 Opening pressure of check valve: approx. 0,3 bar
 Drilling pattern to DIN 24340-A25 and
 ISO 4401-08-07-0-94

Custom orders on request
 All dimensions subject to change without notice
 Also available with blocking in A and B only
 Dimension sheet on request, locking device retrofitable



Sandwich plate · NG 32 · PN 315

Article-No. 208 038

Weight: approx. 60 kg
 Drilling pattern to DIN 24340-A32 and
 ISO 4401-10-08-0-94

Custom orders on request
 All dimensions subject to change without notice
 also available with blocking in A and B only
 Dimension sheet on request, locking device retrofitable

