

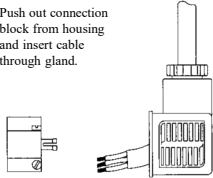
## Installation and Maintenance - Product E45, 'Cnomo' Series

### Electrical Connections

Electrical connections vary depending on the coil type fitted to the valve. The principal alternatives are either Plug and Socket or Conduit Entry.

### Plug and Socket Coils

Push out connection block from housing and insert cable through gland.



Electrical connections are made to terminals 1, 2 and earth if necessary. When a surge suppression diode has been fitted ensure that terminal 1 is positive and terminal 2 is negative.



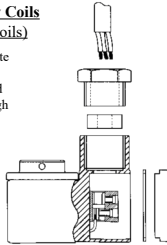
Top view without Surge suppression diode.



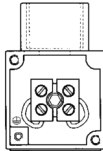
Top view with Surge suppression diode.

### Conduit Entry Coils (terminal box coils)

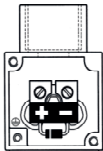
Remove cover plate to allow access to terminal block and insert cable through gland and bush.



Electrical connections are made to the two terminals and earth if necessary. When a surge suppression diode has been fitted the terminals will be polarity sensitive. Ensure correct connection.



Top view without Surge suppression diode.



Top view with Surge suppression diode.

**powerite**  
division of Kinetrol Ltd

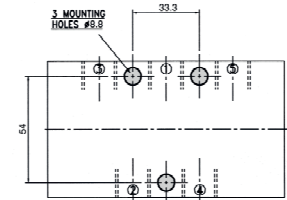
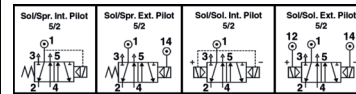
**ROSS**  
a global family

**pneumatrol**

Part codes	E4518C****	Solenoid / Spring, Internally Piloted
	E4580C****	Solenoid / Spring, Externally Piloted
	E4519C****	Solenoid / Solenoid, Internally Piloted
	E4590C****	Solenoid / Solenoid, Externally Piloted

### Installation

The valve body is machined with three mounting holes to the dimensions shown below. This enables the user to mount the valve to a bracket or other suitable location.



### Air supply requirements

#### Filtration & Lubrication

The supply air shall be clean, dry and free from water, moisture, foreign parts and debris. It is recommended that a <40µm filter/regulator be installed as close to the valve as possible to ensure proper supply air quality. The air supply can be either lubricated or non-lubricated. In the case of lubricated air being used, the recommended oil types are ISO and UNI FD22 (Energol HPL ~ Spinnoso ~ Mobil DTE ~ Telles Oil).

Air Pressure Range Table	Internal Pilot Sol. / Spring	External Pilot Sol. / Spring	Internal Pilot Sol. / Sol.	External Pilot Sol. / Sol.
Working Pressure (p.s.i.)	45 to 120	0 to 120	22 to 120	0 to 120
Working Pressure (Bar)	3 to 8	0 to 8	1.5 to 8	0 to 8
Min. Pilot Pressure (p.s.i.)	N/A	45	N/A	22
Min. Pilot Pressure (bar)	N/A	3	N/A	1.5

### Connections

#### Pneumatic Connections

All valve ports are tapped for G1/2 or 1/2"NPT male connectors. The mains air connection is clearly marked with a number 1. The two outlet ports are marked with numbers 2 and 4, and the two exhaust ports are marked with numbers 3 and 5. (See pneumatic symbols at top of page.) Note that if ports are tapped NPT then the body will be stamped with 'NPT' to identify this variation.

#### Electrical Connections

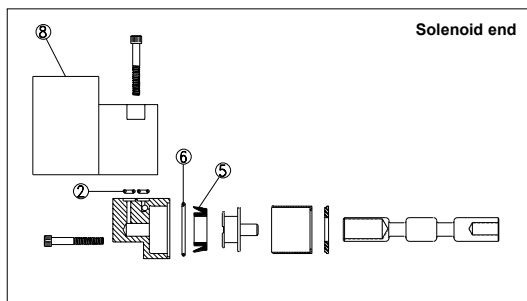
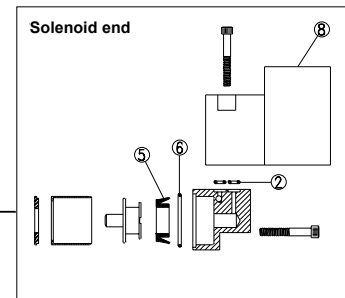
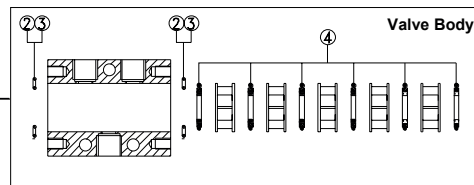
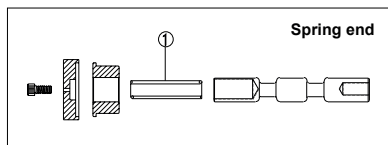
For electrical connection details and information please refer to the back of this sheet.

Spares Information - Product E45, 'Cnomo' Series

**powerite**  
division of Kinetrol Ltd

**ROSS**  
a global family

**pneumatrol**



Item 8						
Safe area coil assemblies			Hazardous area coil assemblies			
Coil type	Voltage	Part code	Coil type	Voltage	Part code	
Terminal Box	24v DC	E13AXCB00B	EExia	24v DC	E13AXCA00B	
	110v AC	E13AXCB00T		24v DC	E13AXCD00B	
	240v AC	E13AXCB00U		110v AC	E13AXCD00T	
MC30	24v DC	E13AXCK00B	EExd	240v AC	E13AXCD00U	
	110v AC	E13AXCK00T		EExm	24v DC	E13AXC900B
	240v AC	E13AXCK00U			110v AC	E13AXC900T
Plug & Socket	24v DC	E13AXCP00B	ExN	240v AC	E13AXC900U	
	110v AC	E13AXCP00T		24v DC	E13AXCN00B	
	240v AC	E13AXCP00U		110v AC	E13AXCN00T	
				240v AC	E13AXCN00U	

Spares parts kit	Consisting of	Item	Quantity
VSK501	Spring	1	1
	Seal*	2	8
	Blanking Disc*	3	2
	Seal	4	6
	Cup Seal	5	2
	Seal	6	2

Note 1:

Not all parts are required for each individual valve.

Note 2:\*

Item 2 is used for internally piloted valves.

Item 3 is used for externally piloted valves.