

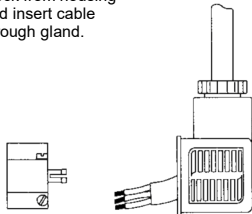
Installation and Maintenance - Product E43, 'Cnomo' Series

Electrical Connections

Electrical connections vary depending on the coil type fitted to the valve. The principal alternatives are either Plug and Socket or Conduit Entry.

Plug and Socket Coils

Push out connection block from housing and insert cable through gland.



Electrical connections are made to terminals 1, 2 and earth if necessary. When a surge suppression diode has been fitted ensure that terminal 1 is positive and terminal 2 is negative.



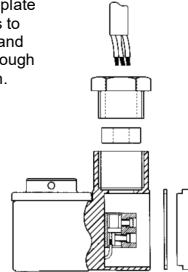
Top view without Surge suppression diode



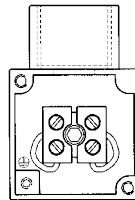
Top view with Surge suppression diode

Conduit Entry Coils (terminal box coils)

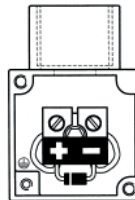
Remove cover plate to allow access to terminal block and insert cable through gland and bush.



Electrical connections are made to the two terminals and earth if necessary. When a surge suppression diode has been fitted the terminals will be polarity sensitive. Ensure correct connection.



Top view without Surge suppression diode



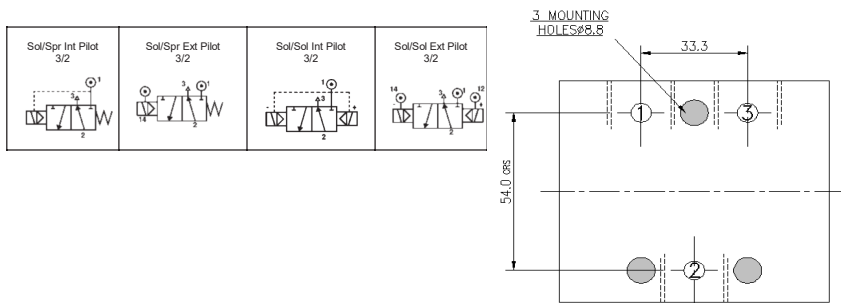
Top view with Surge suppression diode

Installation and Maintenance - Product E43, 'Cnomo' Series

Part codes	E4518C****	Solenoid / Spring, Internally Piloted
	E4580C****	Solenoid / Spring, Externally Piloted
	E4519C****	Solenoid / Solenoid, Internally Piloted
	E4590C****	Solenoid / Solenoid, Externally Piloted

Installation

The valve body is machined with three mounting holes to the dimensions shown below. This enables the user to mount the valve to a bracket or other suitable location.



Air supply requirements

Filtration & Lubrication

The supply air shall be clean, dry and free from water, moisture, foreign parts and debris. It is recommended that a <40 filter/regulator be installed as close to the valve as possible to ensure proper supply air quality. The air supply can be either lubricated or non-lubricated. In the case of lubricated air being used, the recommended oil types are ISO and UNI FD22 (Energol HPL ~ Spinesso ~ Mobil DTE ~ Telles Oil).

Air Pressure Range Table	Internal Pilot Sol / Spr	External Pilot Sol / Spr	Internal Pilot Sol / Spr	External Pilot Sol / Spr
Working Pressure (P.S.I.)	45 to 120	0 to 120	22 to 120	0 to 120
Working Pressure (Bar)	3 to 8	0 to 8	1.5 to 8	0 to 8
Working Pressure (P.S.I.)	N/A	45	N/A	22
Working Pressure (Bar)	N/A	5	N/A	1.5

Connections

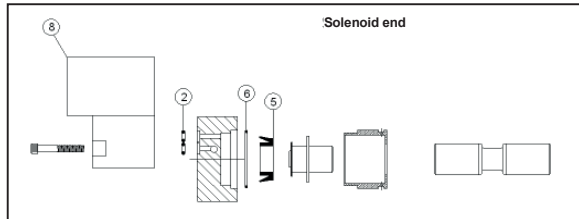
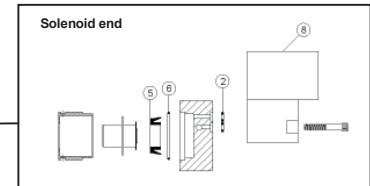
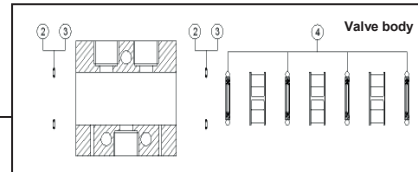
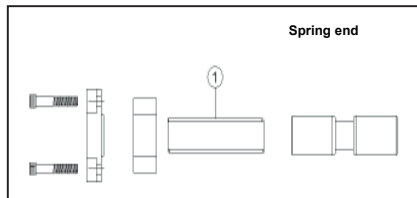
Pneumatic Connections

All valve ports are tapped for G1/2 or 1/2"NPT male connectors. The mains air connection is clearly marked with a number 1. The two outlet ports are marked with numbers 2 and 4, and the two exhaust ports are marked with numbers 3 and 5. (See pneumatic symbols at top of page.)

Note that if ports are tapped NPT then the body will be stamped with 'NPT' to identify this variation.

Electrical Connections

For electrical connection details and information please refer to the back of this sheet.



Item 8					
Safe area coil assemblies			Hazardous area coil assemblies		
Coil type	Voltage	Part code	Coil type	Voltage	Part code
			EExia	24V DC	E43AXCA00B
Terminal Box	24V DC	E43AXCB00B	EExd	24V DC	E43AXCD00B
	110V AC	E43AXCB00T		110V AC	E43AXCD00T
	240V AC	E43AXCB00U		240V AC	E43AXCD00U
MC30	24V DC	E43AXCK00B	EExme	24V DC	E43AXC900B
	110V AC	E43AXCK00T		110V AC	E43AXC900T
	240V AC	E43AXCK00U		240V AC	E43AXC900U
Plug & Socket	24V DC	E43AXCP00B	EExn	24V DC	E43AXCN00B
	110V AC	E43AXCP00T		110V AC	E43AXCN00T
	240V AC	E43AXCB00U		240V AC	E43AXCN00U

Spares parts kit	Consisting of	Item	Quantity
VSK501	SPRING	1	
	SEAL*	2	
	BLANKING DISC*	3	
	SEAL	4	
	CUP SEAL	5	
	SEAL	6	

Note 1:
Note 2: *

Not all parts are required for each individual valve.
Item 2 is used for internally piloted valves.
Item 3 is used for externally piloted valves.