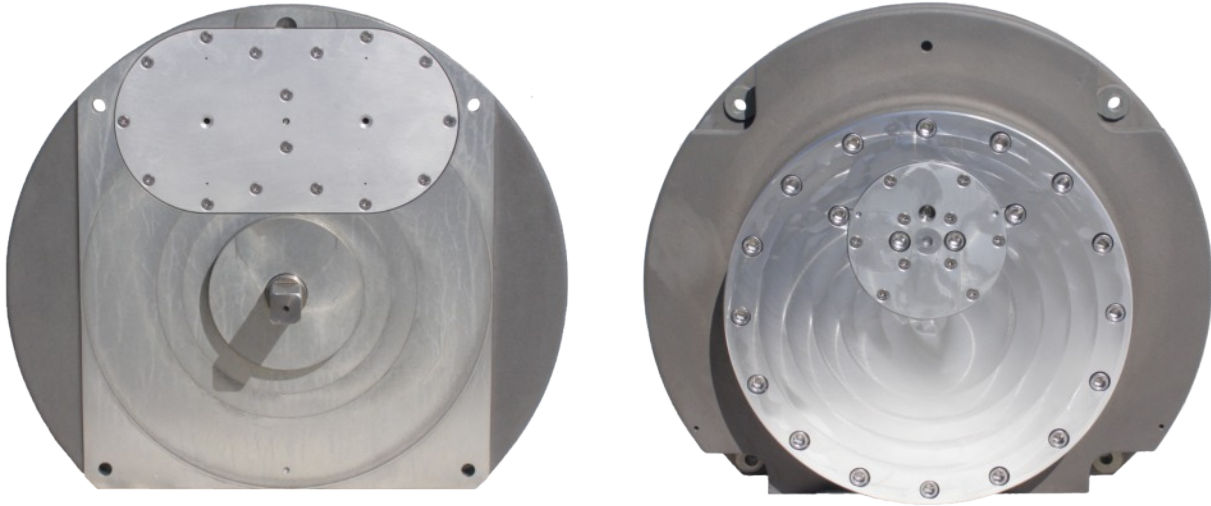


# Kinetrol Model LX 220° Vane Dashpot



## Specification

### Rate

Adjustable

Max 18000 Nm/rad/s / 159300 lbf.ins/rad/s

### Angle of travel

220° ± 1°

External end stops must be provided

### Max. safe torque

640 Nm / 5660 lbf.ins

### Ambient temperature range

0°C to 60°C (32°F to 140°F)

### Shaft material

Stainless steel 431S29

### Body material

Aluminium alloy LM25

### Weight

45 kg / 99 lbs

## Dimensions

Dimensions in mm

