

# Kinetrol Model 09 Double Acting Actuator

## Specification

### Angle of Travel (adjustable)

80° - 100°

(restricted travel versions available)

### Displaced Volume

644 cm<sup>3</sup> / 39.3 in<sup>3</sup>

### Materials of Construction

**Casing:** Pressure die cast aluminium alloy

**Vane & Output Shaft:** SG iron, zinc plated

**Shaft bushes:** PTFE coated bronze (lead free)

**Seals:** Moulded polyurethane

**Seal expanders:** Stainless spring steel

### Finish

Epoxy stove enamel

### Weight

3.86 kg / 8.52 lb (excluding coupling)

### Operating Temperature

-40°C to +80°C (-40°F to +176°F)



ATEX Category 2

## Double Acting Torques

### Metric Units - Nm

Actuator Model	Pressure (bar)											
	1.5	2.0	2.5	3.0	3.5	4.0	4.5	5.0	5.5	6.0	6.5	7.0
09-100	46	64	83	102	121	140	159	179	199	220	241	261

### English Units - lbf ins

Actuator Model	Pressure (psi)									
	20	30	40	50	60	70	80	90	100	
09-100	360	590	820	1050	1280	1530	1780	2020	2280	

## Options

- Fail safe spring return units
  - clockwise or counter clockwise
- Limit switch boxes for open/closed indication
  - various switches including hazardous area
- Integral solenoid valve
- AP pneumatic positioner - full range of options
- EL electropneumatic positioner - full range of options
- P3 on/off positioner - full range of options including hazardous area
- Clear Cone monitor
- 180° and 120° model
- Female drive and mounting details to DIN 3337 and ISO 5211
- ISO adaptor
- G $\frac{3}{8}$  or  $\frac{1}{2}$  NPT air port option available - contact Kinetrol
- Spring to centre
- Geared manual override
- High temperature / Low temperature options
- VDI/VDE 3845 Namur accessory mounting option available - contact Kinetrol
- Available in Blueline paint finish

# Kinetrol Model 09 Double Acting Actuator

## Product Code

## ● Air Ports

## ● Mount Holes

094-100

G $\frac{1}{4}$

4 x M10 x 20 deep on 65.0 PCD  
2 x M8 x 16 deep on 50.8 PCD

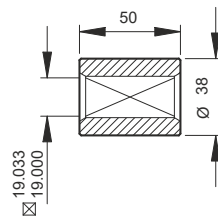
097-100

$\frac{1}{4}$  NPT

4 x  $\frac{3}{8}$ -16 UNC x 0.79" deep on 2.56" PCD  
2 x  $\frac{5}{16}$ -18 UNC x 0.63" deep on 2.00" PCD

Visual red indicator supplied as standard

## Dimensions



Standard Coupling  
(supplied with actuator  
weight 0.3 kg / 0.6 lbs)

