

Kinetrol Model OM0 Miniature Double Acting Actuator

Specification

Angle of Travel (adjustable)

80° - 100°

(restricted travel versions available)

Displaced Volume

2.4 cm³ / 0.15 in³

Materials of Construction

Casing: Pressure die cast ZL16 zinc alloy

Vane & Output Shaft: Stainless steel

Shaft bushes: PTFE coated bronze (lead free)

Seals: Moulded polyurethane

Seal expanders: Stainless spring steel

Finish

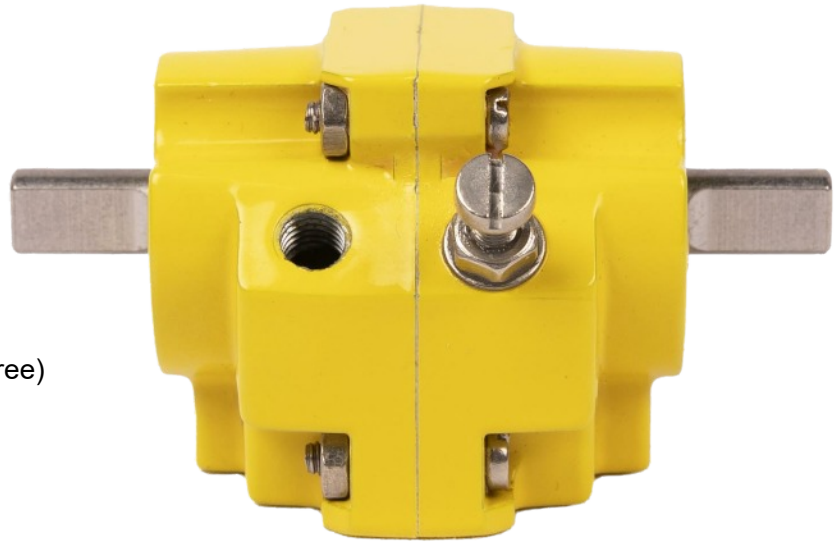
Epoxy stove enamel

Weight

0.12 kg / 0.26 lb

Operating Temperature

-40°C to +80°C (-40°F to +176°F)



Double Acting Torques

Metric Units - Nm

Actuator Model	Pressure (bar)											
	1.5	2.0	2.5	3.0	3.5	4.0	4.5	5.0	5.5	6.0	6.5	7.0
OM0-100	0.1	0.2	0.25	0.35	0.4	0.5	0.55	0.6	0.7	0.75	0.85	0.9

English Units - lbf ins

Actuator Model	Pressure (psi)									
	20	30	40	50	60	70	80	90	100	
OM0-100	1	2	3	3.5	4.5	5	6	7	8	

Dimensions

