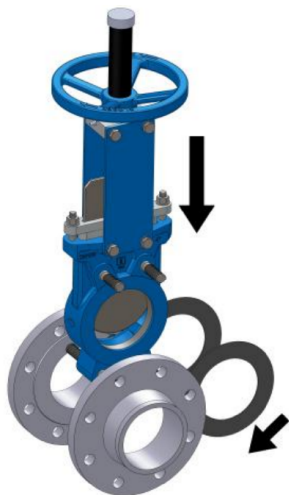
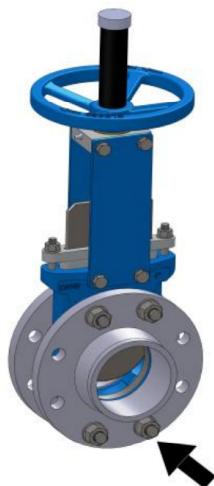


Instructions for the Installation of ABO Knife Gate Valves Series 200 and 300



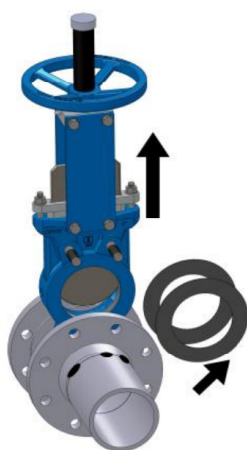
1. Position the gate valve with screw studs together with gaskets between the flanges.



2. Move the flanges to the screw studs and tighten lightly with four nuts.



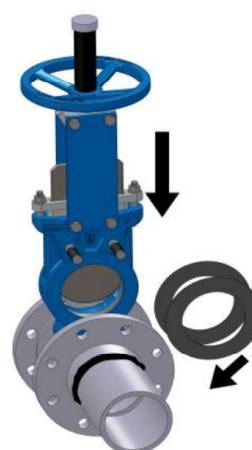
3. Attach the flanges at several points to the piping using a welding electrode.



4. Remove the valve.



5. Weld the flanges to the piping.



6. When the flanges have cooled down, insert the gate valve again with gaskets. The arrow on the body must coincide with the flow direction.



7. Position the gate valve, add the remaining bolts and nuts and tighten them (in a “criss-cross pattern”).