

# 3-WAY BALL VALVE TYPE 23 15mm - 100mm(1/2inch - 4inch)

## FEATURES



### Compact and Economic

The 3-WAY BALL VALVES allows two flow patterns, using one valve. The valve is suitable for a pipeline which requires two ball valves and a tee. That is, the 3-WAY BALL VALVES is economic because it makes piping compact and saves space.

### Reversible Flow Direction

The 3-WAY BALL VALVE is based on the Asahi true union ball valve design which can be installed or removed just by tightening or loosening its union nut. The 3-WAY BALL VALVES has a L-shaped fluid channel and a handle which can be rotated 360°. The arrow on top of the handle indicates the flow direction.

### Equipped ISO Mounting Flange

The feature provides for easier mounting of actuators on valves.

### Interchangeable with Ball Valve Type21

The face to face dimensions, as well as the connecting parts, end connectors and union nuts, are the same as the ball valve Type21.

### Other Special Features

- Double O-ring seal on stem for an added protection.
- W-L port ball and \*Cross port ball are available upon request.

\*Note: Cross port ball is available at the size of 15mm (1/2inch) up to 50mm (2inch).  
- Built-in spanner wrench on the handle for valve disassembly and assembly.

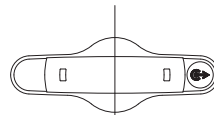
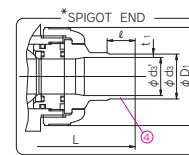
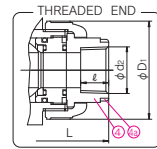
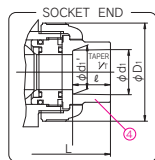
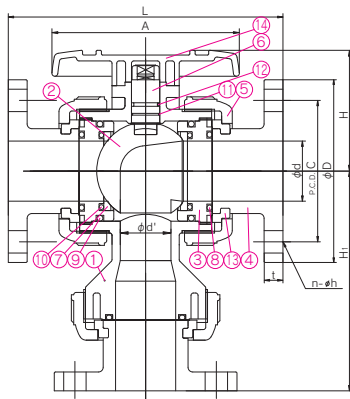
### NSF Product

NSF("NSF/ANSI STANDARD 61" Drinking Water System Components-Health Effects)Product.

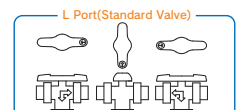
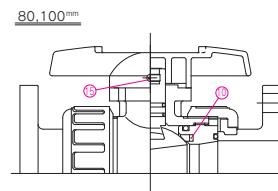
:3-WAY BALL VALVE TYPE 23(Material:PVC+EPDM,FKM)

\*Certified products bear an NSF Certification Mark.

## DIMENSION



(Top view of the handle.)  
NOTE: The shape and appearance of assembly differ a little with nominal size compared to this drawing.



Changing the ball allows for standard valve to be converted (only 15mm(1/2inch)~50mm(2inch))



\*Available at the size of 15mm up to 50mm.

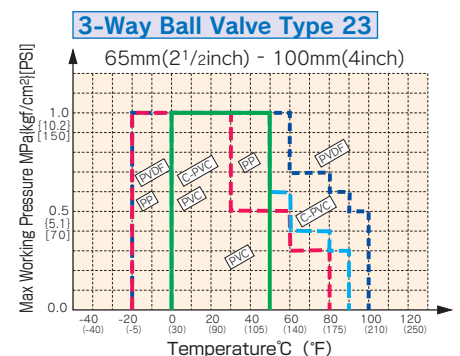
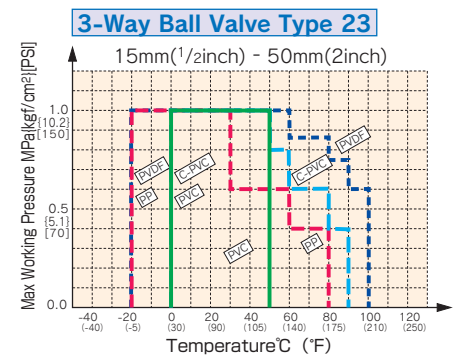
## MATERIAL AND WORKING TEMPERATURE

Body Material	Working Temperature °C (°F)	Max. Working Pressure(at R.T.) MPa{kgf/cm²}[PSI]	End Connectors			
			Socket End	Threaded End	Flanged End	Spigot End
Unplasticized Polyvinyl Chloride(PVC)	0 - 50(30 - 120)	1.0{10.2}[150]	○	○	○	○
Chlorinated Polyvinyl Chloride(C-PVC)	0 - 90(30 - 195)	1.0{10.2}[150]	○	○	○	○
Polypropylene(PP)	-20 - 80(-5 - 175)	1.0{10.2}[150]	○*	○	○	○
Polyvinylidene Fluoride(PVDF)	-20 - 100(-5 - 210)	1.0{10.2}[150]	○*	○	○	○

\* PP and PVDF 3-WAY BALL VALVES of the Socket End are welded valves.

Note : 1. There is a dead space in a ball valve. Volatile liquids, such as a hydrogen peroxide (H<sub>2</sub>O<sub>2</sub>) and Sodium hypochlorite (NaClO) may vaporize in the dead space, thus causing an abnormal pressure increase in the valve. (Important: Gas is compressible. Thus if its pressure rises abnormally, the valve can burst ejecting dangerous fragments.

## WORKING PRESSURE VS. TEMPERATURE



## PARTS & MATERIALS

No.	DESCRIPTION	Pcs.	MATERIAL	No.	DESCRIPTION	Pcs.	MATERIAL
①	BODY	1	PVC,PP,C-PVC,PVDF	⑨	O-RING(B)	2	EPDM,FKM,others
②	BALL	1	PVC,PP,C-PVC,PVDF	⑩	O-RING(C), CUSHION	2	EPDM,FKM,others
③	CARRIER	2	PVC,PP,C-PVC,PVDF	⑪	O-RING(D)	1	EPDM,FKM,others
④	END CONNECTOR	3	PVC,PP,C-PVC,PVDF	⑫	O-RING(E)	1	EPDM,FKM,others
⑤	UNION NUT	3	PVC,PP,C-PVC,PVDF	⑬	STOP RING	3	PVDF(Used for Flanged End)
⑥	STEM	1	PVC,PP,C-PVC,PVDF	⑭	HANDLE	1	ABS
⑦	SEAT	2	PTFE	⑮	TAPPING SCREW(A)	1	STAINLESS STEEL304
⑧	O-RING(A)	3	EPDM,FKM,others	⑯	RING	3	STAINLESS STEEL304

Note : The stop ring (⑬) is used for Flanged End valves only.

The ring (⑯) is used for 15,20,and 25mm C-PVC valves.

