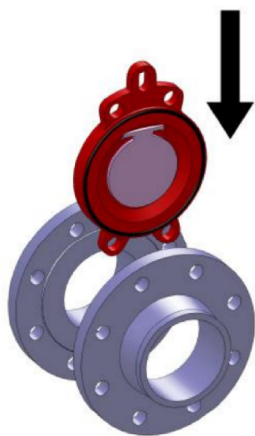
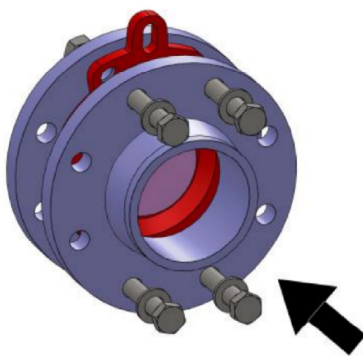


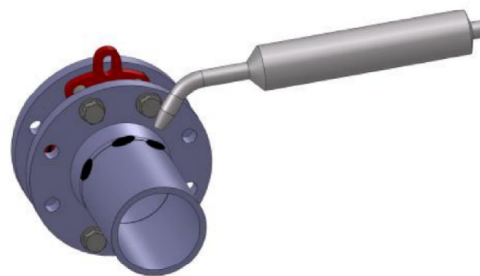
Installation Instructions for ABO Swing Check Valves Series 800



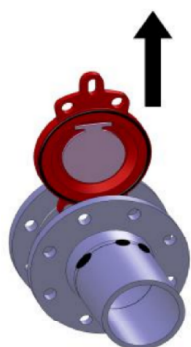
1. Place the valve between the flanges with sufficient distance between them.



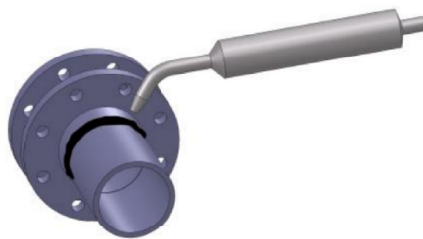
2. Tighten the flanges lightly with four bolts and align the position of the valve.



3. Attach the flanges at several points to the piping using a welding electrode.



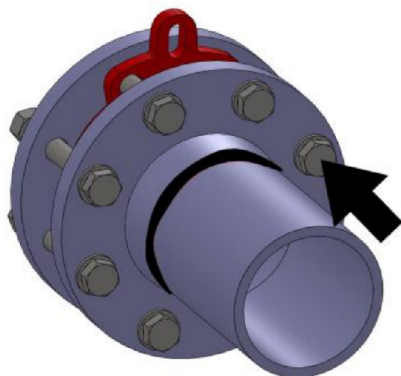
4. Remove the valve.



5. Weld the flanges to the piping.



6. After the flanges have cooled down, insert the valve, and ensure sufficient clearance (see Fig. 1). The arrow on the body must coincide with the flow direction.



7. Centre the valve and tighten it lightly using four bolts. Add the remaining bolts (tighten them in a “criss-cross pattern”).

